

COMPARISON OF SIMULTANEOUS VS CONSECUTIVE APPLICATION OF RADIOFREQUENCY AND THERMAL PRESSURE ENERGY: HISTOLOGY STUDY

HISTOLOGICAL EXAMINATION OF SKIN TISSUE IN PORCINE ANIMAL MODEL AFTER SIMULTANEOUS APPLICATION OF MONOPOLAR RADIOFREQUENCY AND TARGETED PRESSURE ENERGY

Brian M. Kinney M.D.¹, Penka Yonkova M.D.²

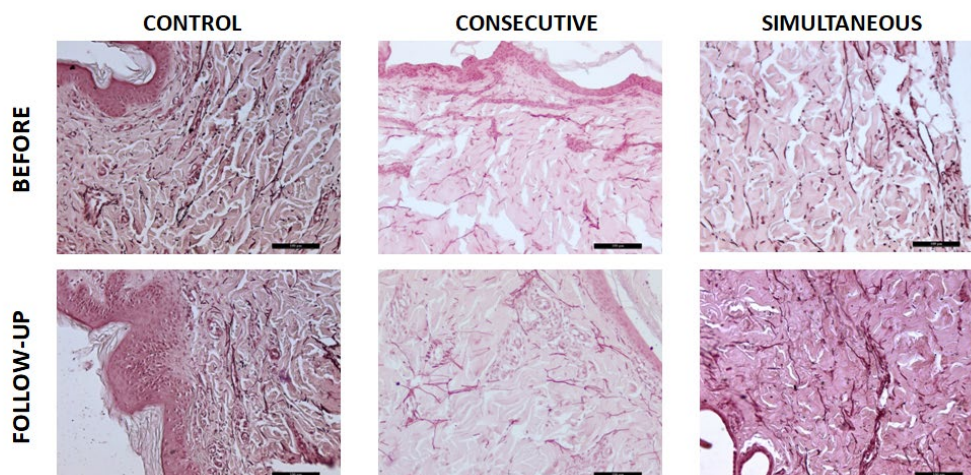
¹University of Southern California, Division of Plastic Surgery, Beverly Hills, California

²Department of Veterinary Anatomy, Histology and Embryology, Faculty of Veterinary Medicine, Trakia University, Stara Zagora, Bulgaria

Presented at the Annual Meeting of the American Society for Laser Medicine and Surgery, 2019 Denver, CO

HIGHLIGHTS

- **Simultaneous application** of Monopolar Radiofrequency and Target Pressure Energy showed **profound improvement** in skin tissue when compared to consecutive treatments.
- Animals treated with simultaneous application showed **59% higher increase in collagen** and **64% higher increase in elastin** when compared to consecutive treatments.
- At 1-month follow-up simultaneous application showed **44% higher increase in thickness of the dermis** opposed to consecutive treatment.



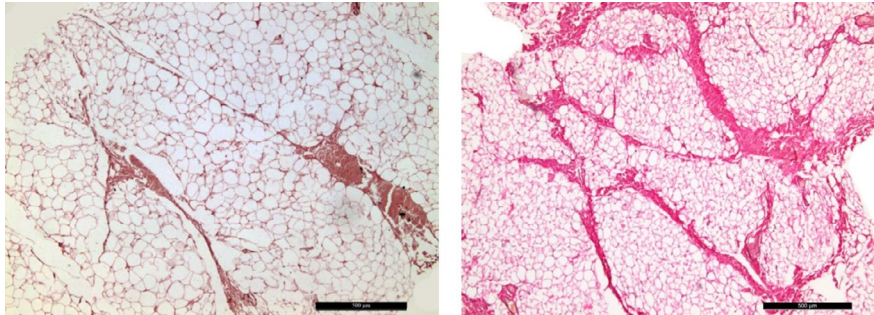
Histological comparison of collagen (pink bundles) and elastin (dark thick strains) densities, detail of dermis; Orcein, bar 100 μ m

DESIGN AND METHODOLOGY

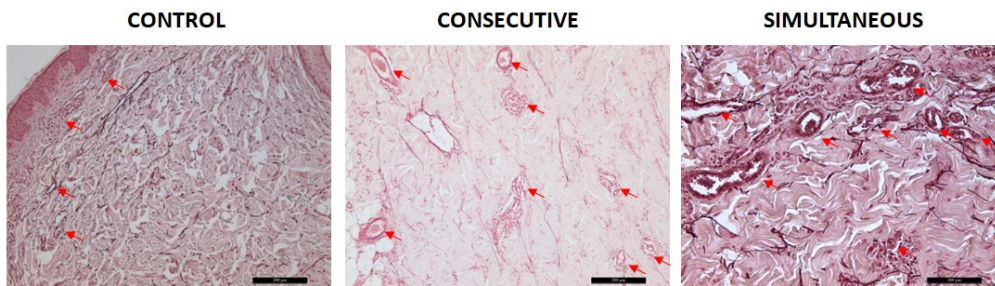
- Discover the difference between simultaneous and consecutive application of monopolar RF with Targeted Pressure Energy (TPE).
- All treated pigs received 4 weekly abdominal treatments.
- Animal histology, 5 pigs in total: 2 pigs treated by simultaneous emission of RF and TPE, 2 pigs by consecutive emission, and 1 untreated control pig.
- Skin biopsies were obtained at baseline, after 4th treatment, and at 1-month follow-up.

RESULTS

- This study shows that **simultaneous application induces a greater increase of collagen fibers, elastin fibers, and dermal thickness.**
- Combined **TPE and monopolar RF** caused an **increase** in the number of blood vessels in the dermis.
- Application of TPE and monopolar RF affected the **shape and size of adipocytes** (marker of lipolysis).
- The control animal did not show any significant changes.



Adipocytes and septa in hypodermis before (left, Orcein) and 1-month after (right, Picrosirius red) simultaneous treatment, bar 500 µm. Adipocytes are visibly smaller after RF/TPE treatment, while interlobular septa are better organized.



Samples taken at the 1-month follow-up, detail of dermis; Orcein, bar 200 µm; Blood vessels depicted by arrows.